

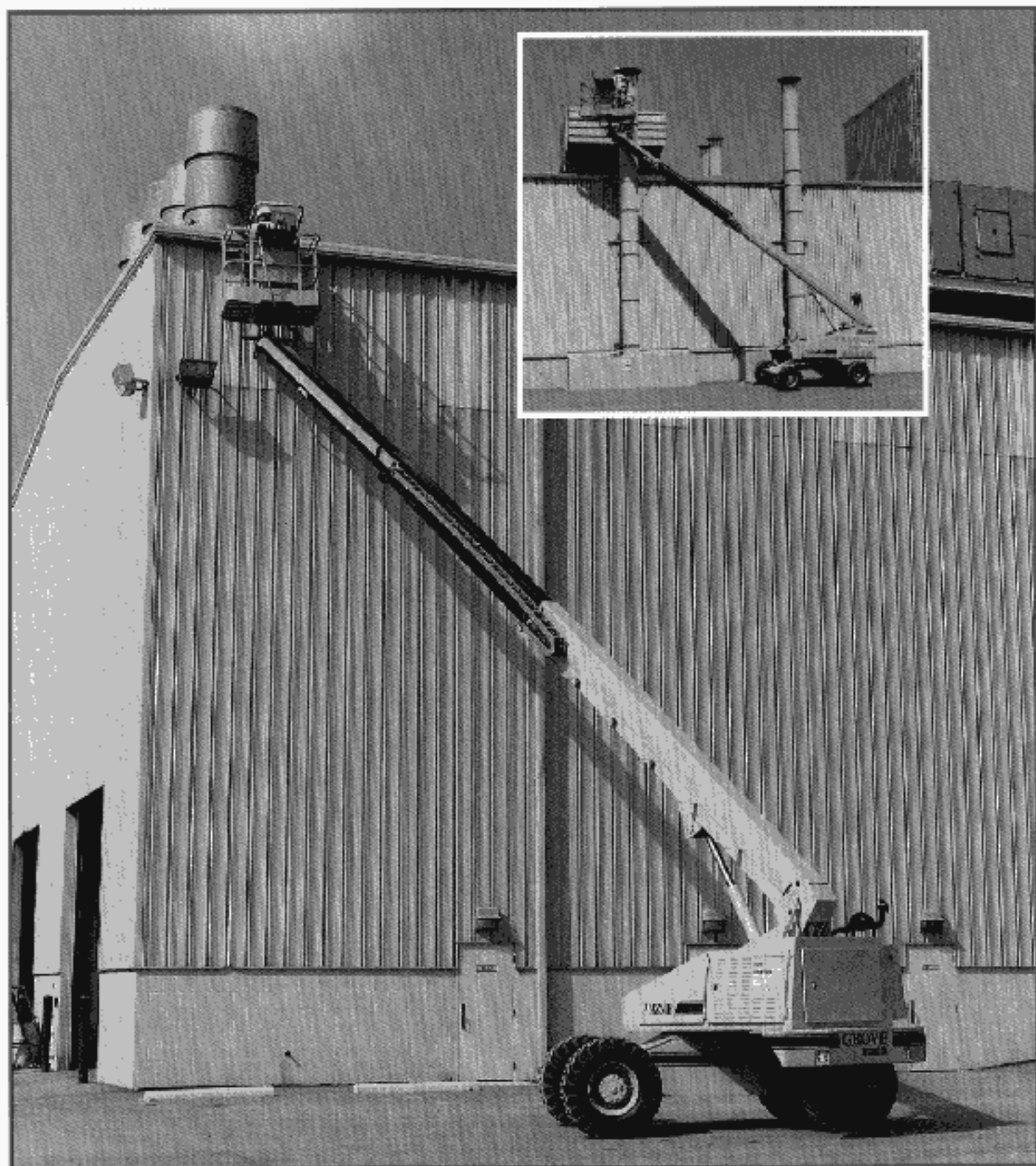


GROVE[®]
MANLIFT[®]

A GROVE WORLDWIDE COMPANY

MZ48B MZ66B

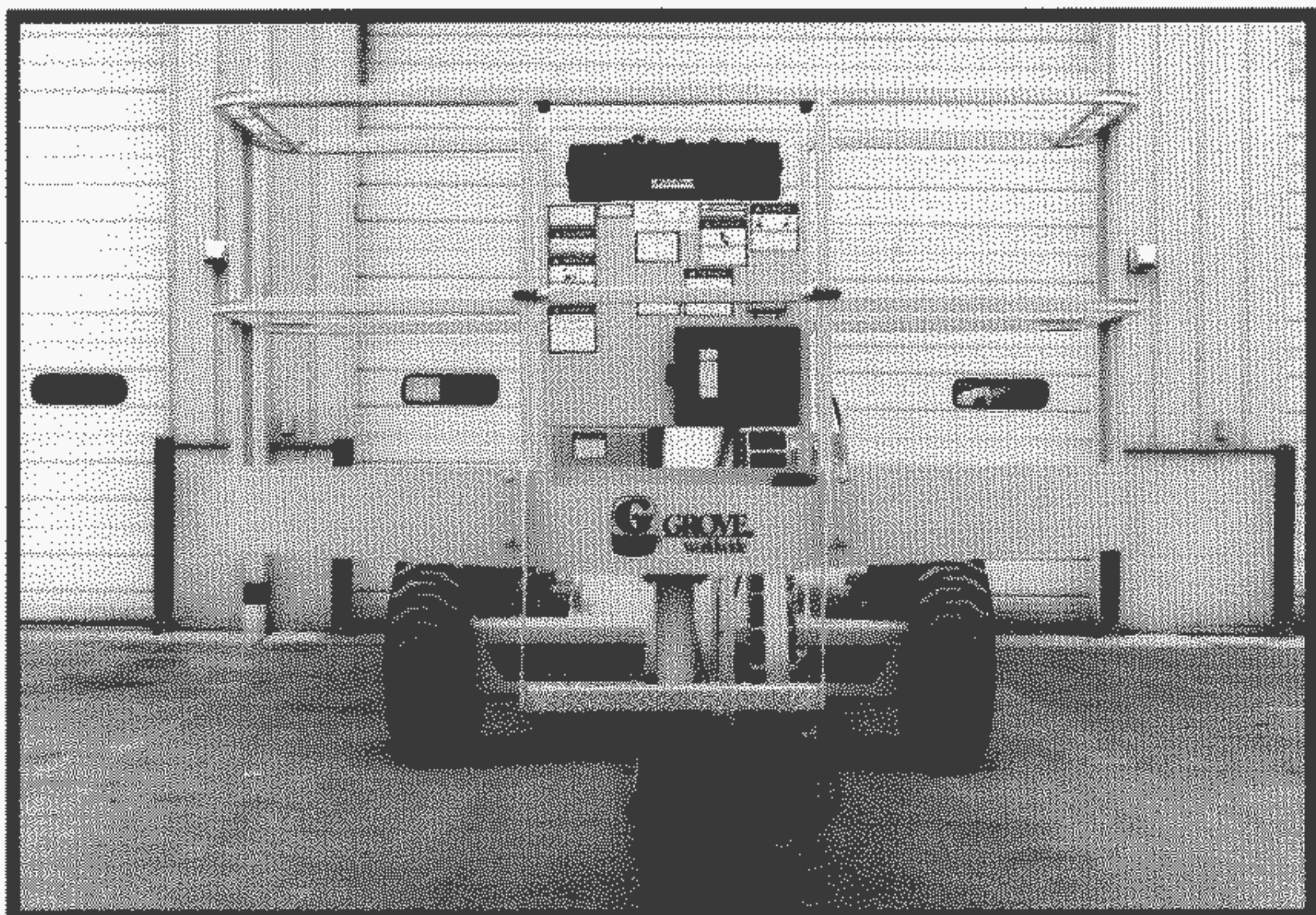
Self-Propelled Aerial Work Platforms



Big performance does come in small packages with the MZ48B and MZ66B from Grove Manlift! Both models offer compact dimensions and low GVW for ease of transportation and are built construction tough to tackle the most demanding jobs.

Check these features!

- Working heights of 48 ft. (14.63m) and 66 ft. (20.11m) respectively.
- Unrestricted platform capacities of 600 lbs. (272kg) on the MZ48B and 500 lbs. (227kg) on the MZ66B.
- Proportional controls with "ramp-to-zero" for smooth operation.
- All steel boom featuring the exclusive Grove trapezoidal design.



Optional 8 ft. (2.4m) platform provides 24 square feet (2.18 m²) of work space

Standard equipment

Platform

All-welded 36 x 60 in. (0.91 x 1.52m) tubular aluminum work platform assembly with inside handrails, sliding bar gate and 180° hydraulic platform rotator. 44 in. (1.12m) high railings with 6 in. (0.15m) toeboard.

110-volt AC wiring to platform with ground fault interrupter, plug and junction box on turntable, and two outlets on platform.

Controls

Upper control panel features proportional joystick controllers with adjustable "ramp to zero" for

drive, lift, telescope and swing. Non-proportional control switches for steering, platform level and platform rotate. Selection switches for function speed (low/torque/high). Control enable system* with foot pedal and indicator light. Push buttons for auxiliary power, engine start, choke, emergency stop and driving horn. MZ66B panel also features a boom extend cable back-up light.



Proportional controls with "ramp-to-zero" provide smooth machine functions.

Lower control panel features non-proportional control switches for lift, telescope, swing, platform level and platform rotate. Selection switches for lower/upper controls, and auxiliary power. Also included are a voltmeter, hourmeter and ignition switch.

Lockable master power disconnect switch.

Boom

All-steel exclusive trapezoidal shaped boom.

MZ48B features a 2-section boom extended by a single stage, double acting hydraulic cylinder with integral load holding valve.

MZ66B features a 3-section boom with mid-section extension by a single stage, double-acting hydraulic cylinder with integral load-holding valve. Synchronized extension of the fly section by a leaf-chain with cable back-up.

External boom power guide routes hydraulic and electric lines to the platform.

Double-acting lift cylinder with integral load-holding valve elevates the boom.

Ball bearing swing circle with 360° continuous superstructure rotation. Planetary double reduction gearbox with hydraulic motor and spring-applied hydraulically released brake. Plunger-type mechanical house lock.

Power Plant

Nissan A-15 4-cylinder water cooled gasoline engine with 42.5 hp (31 kw) @ 3000 rpm.

12-volt DC negative ground battery with 625 CCA @ 0° F (-17°C).

30 gal. (114 liter) steel fuel tank with sight gauge.

Hydraulic System

Pressure/flow compensated, variable displacement axial piston pump with 26 gpm (98.4 lpm). Maximum system operating pressure of 3500 psi (241 bar).

Electrically activated consolidated valve bank provides simultaneous function capability.

Chassis

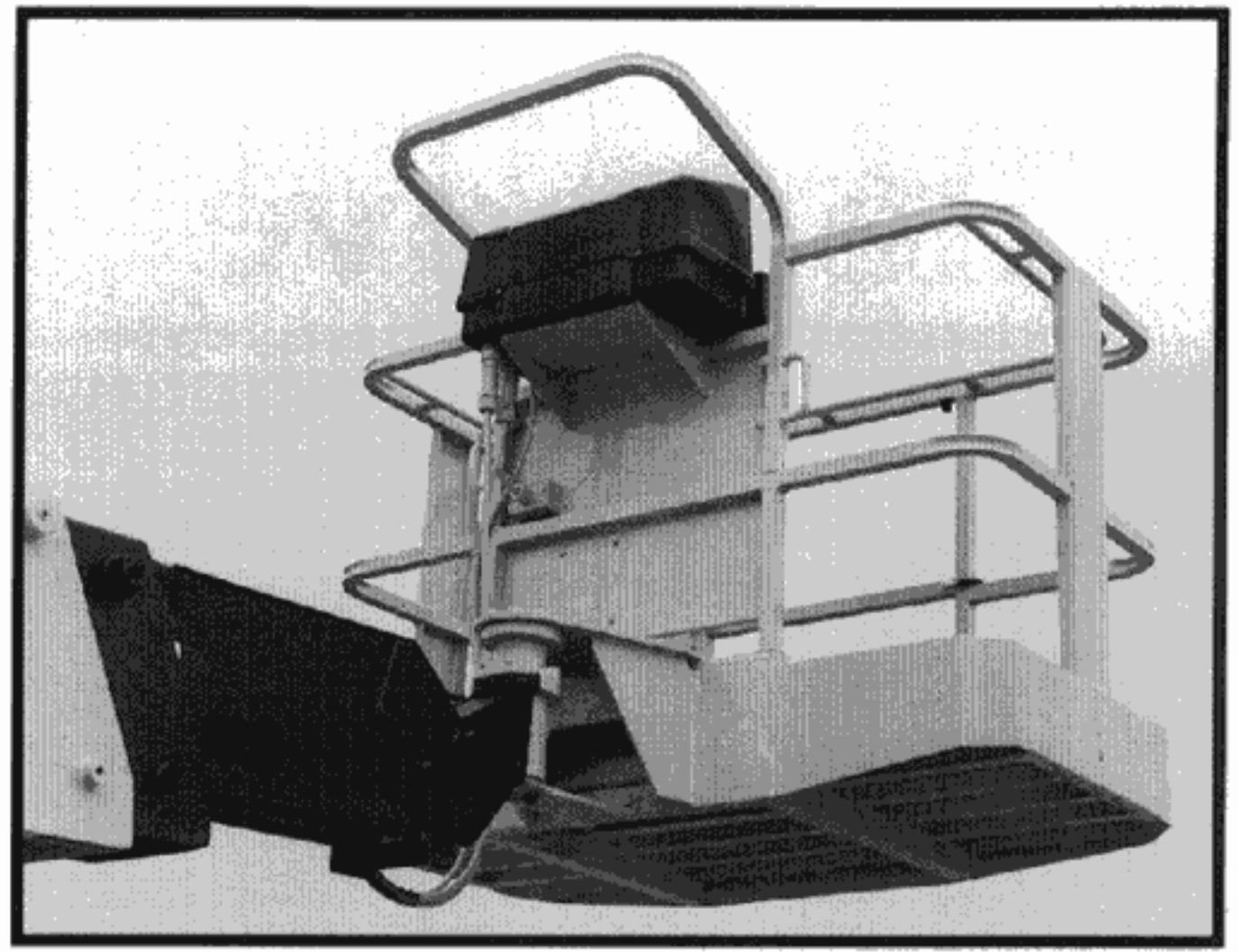
Two-wheel, two-speed planetary drive hubs on the rear wheels.

Counterbalance valve provides dynamic braking. Automatic spring-applied, hydraulically released disc type parking brakes on the drive wheels.

Front wheel steering.

Tilt alarm, all motion alarm.

Lift/tie down lugs.

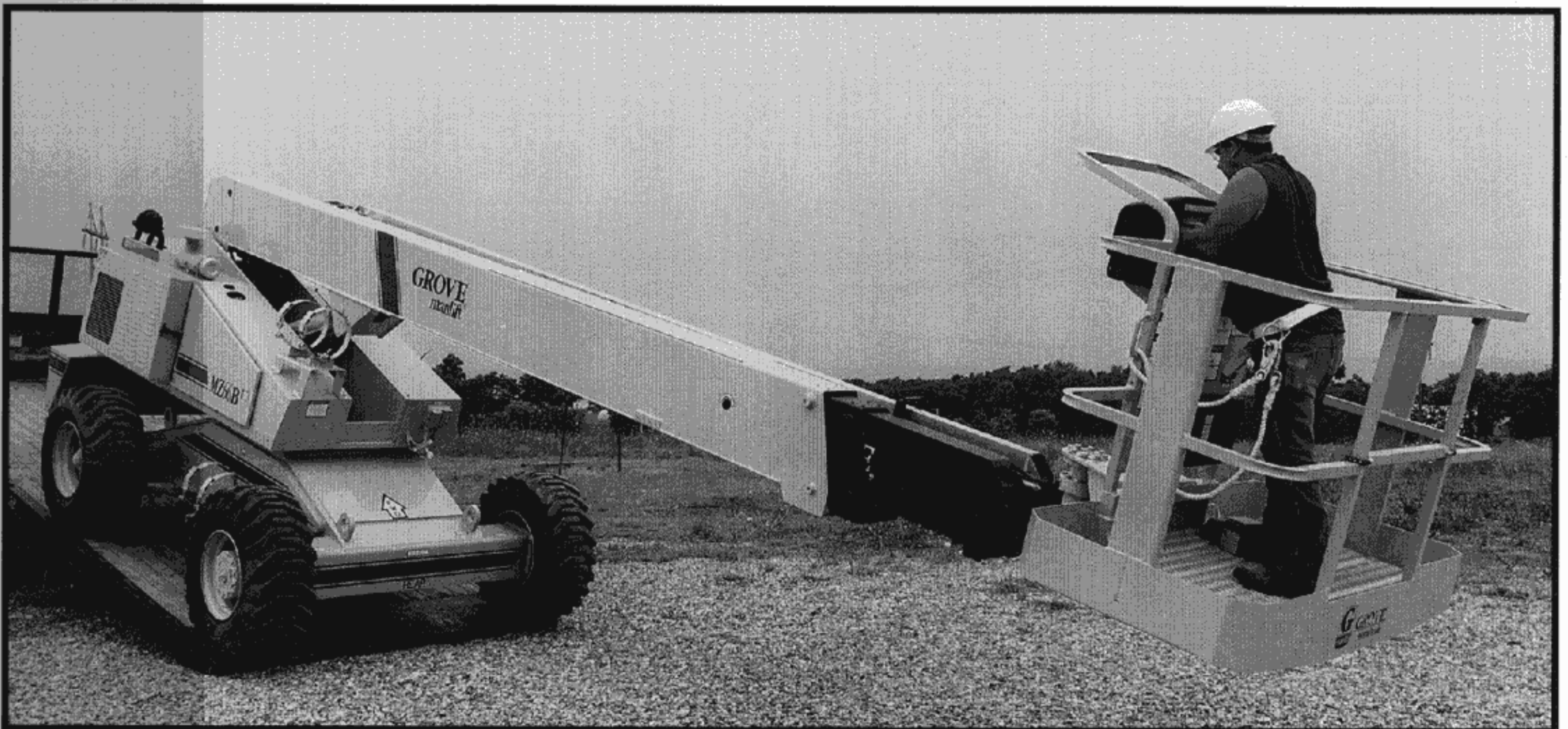


End mount basket option increases horizontal reach on the MZ48B and MZ66B.

Options

- Nissan A-15 dual/fuel engine.
- Deutz F3L-1011 3-cylinder air cooled diesel engine with 41.5 hp (30.5 kw) @ 3,000 rpm.
- 72 in. (1.8m) or 96 in. (2.4m) platform.
- Enclosed upper control box cover.
- 2,000 watt 110V AC generator.
- Air power to platform.
- Platform work lights.
- Amber strobe lights.
- Travel lights (drive and back-up).
- Four wheel drive.
- Hostile Environment Protection Package.
- End mount basket.

****Denotes patented Grove feature.***



Both the MZ48B and MZ66B are compact for ease of transport.

Specifications

MZ48B

MZ66B

Platform:

| | | |
|-------------------|----------------------|-----------------------|
| Working Height | 48 ft. (14.63m) | 66 ft. (20.11m) |
| Platform Height | 42 ft. (12.82m) | 60 ft. (18.28m) |
| Horizontal Reach | 30 ft. 6 in. (9.29m) | 48 ft. 8 in. (14.83m) |
| Platform Capacity | 600 lbs. (272kg) | 500 lbs. (226kg) |

Dimensions:

| | | |
|--------------------------|------------------------|------------------------|
| Platform Size | 36x60 in. (0.91x1.52m) | 36x60 in. (0.91x1.52m) |
| Overall Height (Stowed) | 7 ft. 7 in. (2.31m) | 7 ft. 11.5 in. (2.43m) |
| Overall Length | 22 ft. 7 in. (6.88m) | 25 ft. 4 in. (7.72m) |
| Overall Width | 7 ft. 11 in. (2.41m) | 7 ft. 11 in. (2.41m) |
| Wheelbase | 8 ft. (2.44m) | 8 ft. (2.44m) |
| Turning Radius Outside | 18 ft. (5.48m) | 18 ft. (5.48m) |
| Ground Clearance | 9.625 in. (0.24m) | 12.75 in. (0.32m) |
| Tailswing (beyond tires) | 3 ft. 5 in. (1.04m) | 4 ft. 4 in. (1.32m) |

Performance:

| | | |
|----------------------------|-------------------|-------------------|
| Maximum Drive Speed | 3.0 mph (4.8 kph) | 3.0 mph (4.8 kph) |
| Gradeability (Theoretical) | 40% | 25% |
| Tire Size | 12:00x16.5-8PR | 15x19.5-12PR |
| Tire Fill | Air | Air |

Power Source:

| | | |
|--------------------|----------------------|----------------------|
| Engine Make/Model | Nissan A-15 | Nissan A-15 |
| Engine Horsepower | 42.5 hp (31 kw) | 42.5 hp (31 kw) |
| Fuel Tank Capacity | 30 gal. (114 liters) | 30 gal. (114 liters) |

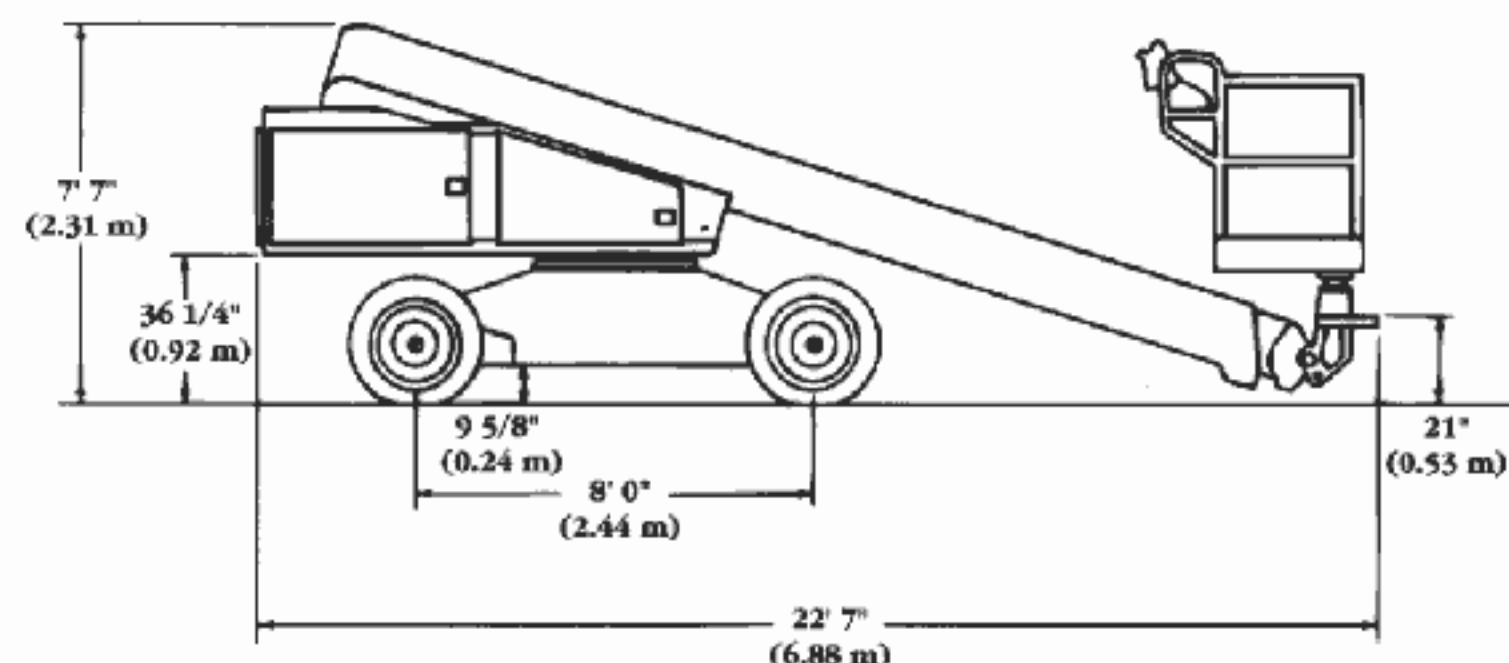
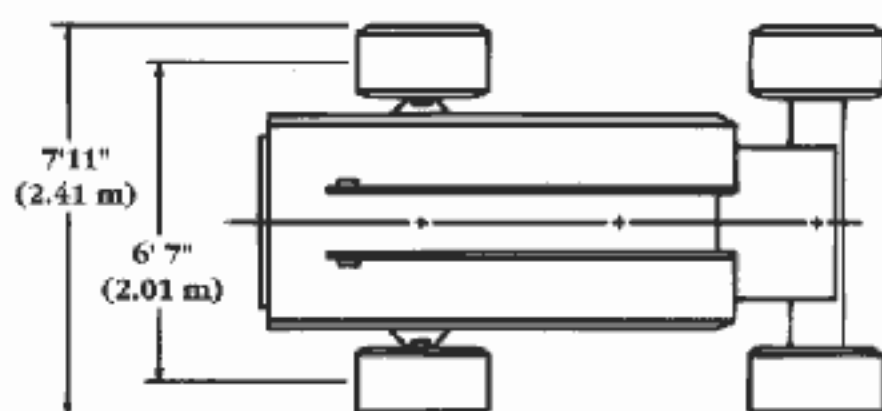
Hydraulics:

| | | |
|---------------------|----------------------|----------------------|
| Reservoir Capacity | 30 gal. (114 liters) | 30 gal. (114 liters) |
| Hydraulic Pump Type | Axial Piston | Axial Piston |
| Auxiliary Power | Std. | Std. |

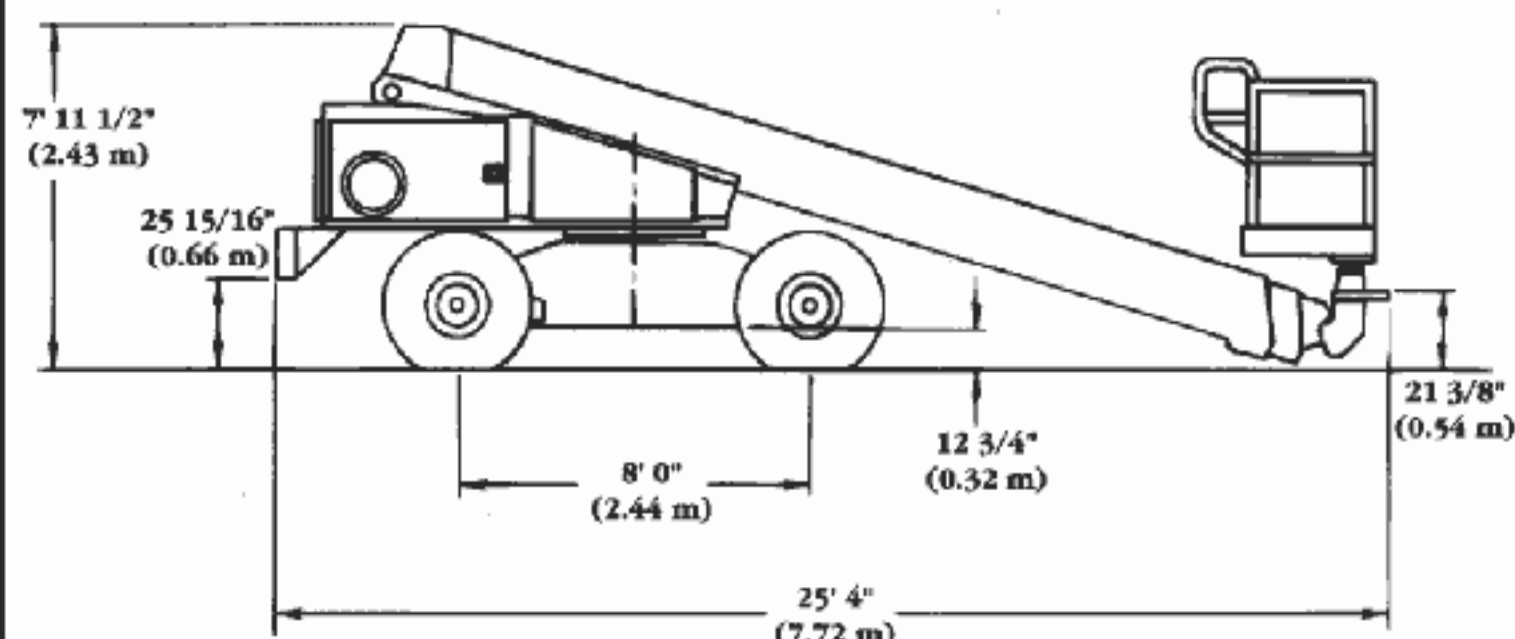
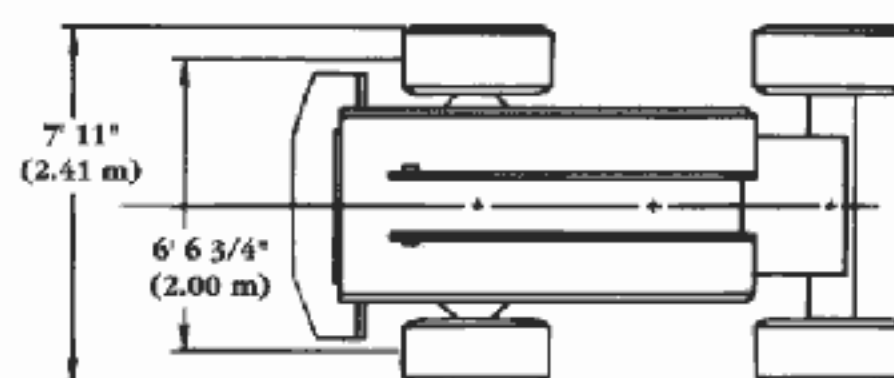
Shipping Information:

| | | |
|---------------|------------------------------------|--------------------------------------|
| Weight | 11,500 lbs. (5,216 kg) | 20,500 lbs. (9,298 kg) |
| Shipping Cube | 1,426 cu. ft. (40.m ³) | 1,630 cu. ft. (46.20m ³) |

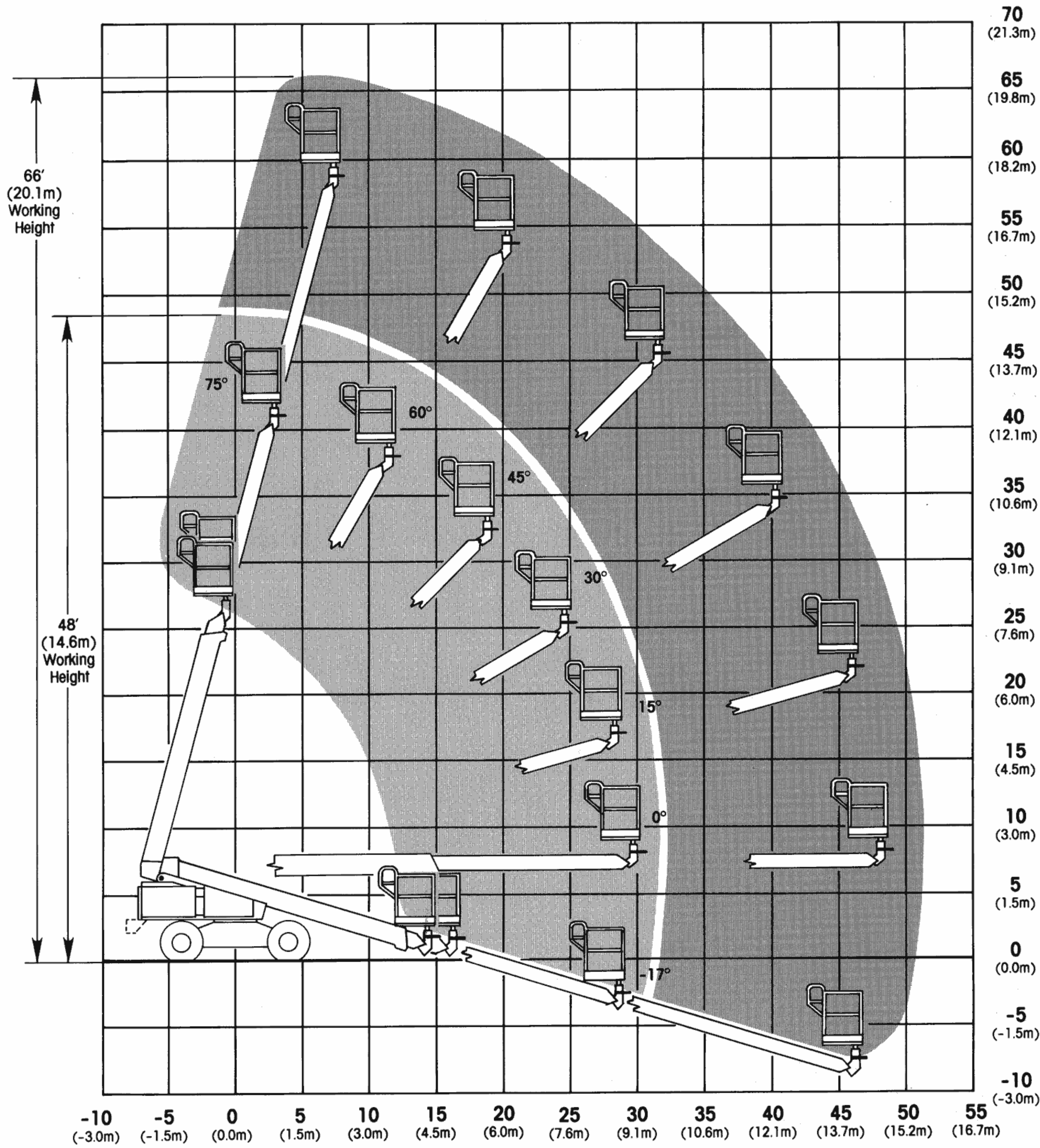
MZ48B



MZ66B



MZ48B/MZ66B



The Grove Manlift . . .

P

RODUCT ROTECTION LAN

12 MONTHS
PARTS
WARRANTY

12 MONTHS
LABOR
WARRANTY

84 MONTHS
STRUCTURAL
WARRANTY

Now there's another reason to choose Grove Manlift aerial work platforms! It's the Grove Manlift Product Protection Plan! Under this plan, all new Grove Manlift aerial work platforms are warranted to be free from defects in material and workmanship for *one full year*. All structural components, including booms, riser, masts, turntables, frames and scissors arms, are covered for *six additional years!** Only Grove Manlift has the confidence -- and the equipment -- to make an offer this good.

*See manufacturer's warranty for any limitations or restrictions which may apply.

**The strongest warranty in the industry . . . for the
strongest line in the industry!**



Grove Worldwide - World Headquarters
1565 Buchanan Trail East
Shady Grove, Pennsylvania 17256
Phone: (717) 597-8121 Fax: (717) 597-4062

Grove North America
P. O. Box 21, Shady Grove, Pennsylvania 17256
Western Hemisphere, Asia/Pacific
Phone: (717) 597-8121 Fax: (717) 597-4062

Grove Europe*
Sunderland, England SR4 6TT
Europe, Africa, Middle East, Near East
Phone: (0191) 565-6281 Fax: (0191) 564-0442

Grove Europe Limited, Registered in England, Number 1845128, Registered office,
Crown Works, Pallion, Sunderland, Tyne & Wear, England SR4 6TT.

Constant improvement and engineering progress make it necessary that we reserve the right to make specification, equipment, and price changes without notice. Illustrations shown may include optional equipment and accessories and may not include all standard equipment. This work platform meets the requirements, to the extent applicable, of US-DOL OSHA regulations and ANSI A92 standards in effect on the date of manufacture.

Distributed By: